

WATCHDOG CLAMPS AND BRACKETS

Attach Roll-Up or Rigid Signs To Watchdog Sign Stands



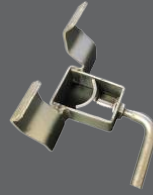
Roll-Up Sign Clamps & Brackets



Universal Bracket



Fast Bracket™



Universal Bracket



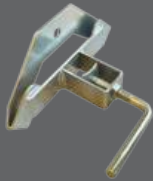
Fast Bracket™



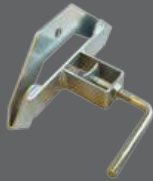
Quick Grip™ Clamp

SH-RSMC-SM <i>fits masts 0.75" - 1"</i> Use With	SH-RMQR-SM <i>fits masts 0.75" - 1"</i> Use With	SH-RSMC <i>fits masts 1" - 1.5"</i> Use With	SH-RMQR <i>fits masts 1" - 1.5"</i> Use With	3SQ-RSC <i>Attaches to Roll-Up Sign Rib</i> Use With
SS100	SS100	SS410A*	SS410A	SS100
SS105	SS105	SS420A	SS420A	SS105
SS400	SS400	SS620A	SS620A	SS400
SS440	SS440	SS621A	SS621A	SS410A
Ships with Sign Stand			BC-12-FB-KIT	SS420A
			BC-15-FB-KIT*	SS440

Rigid Sign Brackets



SH-HSHL-95
fits masts up to 1.5"
Use With



SH-HSHL-96
fits masts up to 1.5"
Use With



SH-HSHL-08
fits masts up to 1.25"
Use With



SH-HSHL
fits masts up to 1.5"
Use With



patent pending

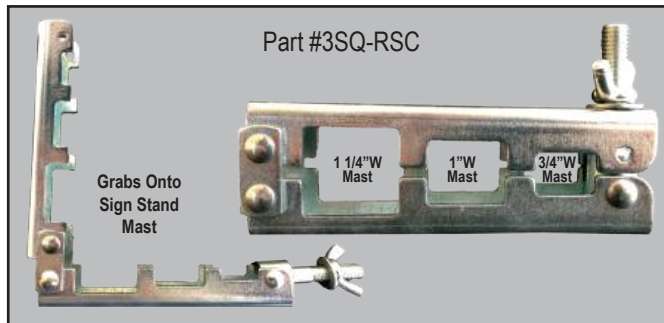
SH-HSHL-SM
fits masts 0.75" - 1"
Use With

	SS410A <i>for top and bottom of sign</i>			SS400 <i>for top and bottom of sign</i>
SS420A <i>for bottom of sign</i>	SS420A <i>for top of sign</i>	SS420A* <i>for top of sign</i>	SS420A* <i>for bottom of sign</i>	SS440 <i>for top and bottom of sign</i>
SS620A <i>for top of sign</i>	SS620A <i>for bottom of sign</i>	*Ships with Sign Stand		
SS621A* <i>for top of sign</i>	SS621A* <i>for bottom of sign</i>			
BC-12-RG-KIT* <i>for top and bottom of sign</i>				
BC-15-RG-KIT* <i>for top and bottom of sign</i>				

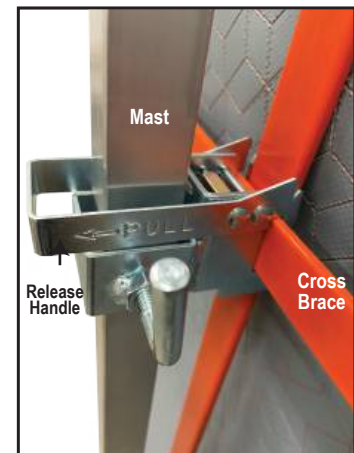
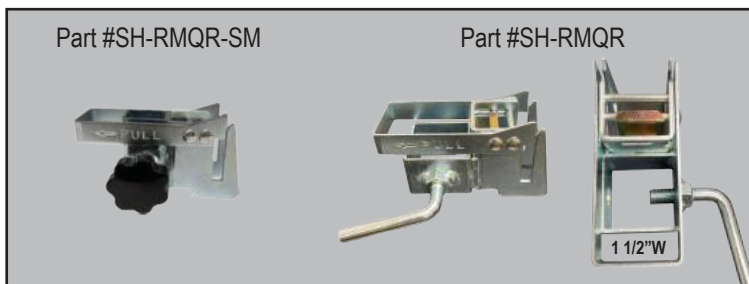
QUICK GRIP™ CLAMP

Comes Attached to Roll-Up Cross Brace For Fast Sign Deployment

- 3 rivets used to attach to horizontal cross brace
- Fits sign stand masts 3/4", 1", and 1 1/4" square tube
- Zinc plated



- Quickly and securely attach roll-up signs to your sign stand
- Slide bracket onto mast and tighten using crank to keep in place
- Easy snap on design, pull back on handle to release
- Part #SH-RMQR-SM fits sign stand masts 3/4" to 1" (square tube)
- Part #SH-RMQR fits sign stand masts 1" to 1 1/2" (square tube)
- Zinc plated



UNIVERSAL BRACKET FOR ROLL-UP SIGNS

- Part #SH-RSMC-SM fits sign stand masts 3/4" to 1" (square tube)
- Part #SH-RSMC fits sign stand masts 1" to 1 1/2" (square tube)
- Zinc plated



PLASTICADE®

100 Howard Avenue
Des Plaines, IL 60018
phone (800) 772-0355
info@plasticade.com

Plasticade.com

US Patent 10546515