

# Plasticade®

## Modular Glare Screen



22° angled blades reduce glare

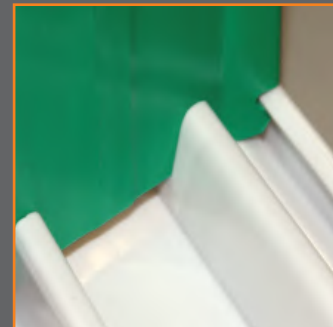


Stacks compactly for transportation and storage



### Vertical Blade and Rail System:

- Attach to existing barrier wall
  - Reduce headlight glare from opposing traffic
  - Curtail gawking in work zones
  - Prevent pedestrians from crossing barrier
- 
- Reduces installation time!
    - Unique "Snap in Place" design
    - quick and easy installation and removal on-site
    - limits worker exposure to dangerous work zones
  - Reduces labor costs!
    - No time-consuming preassembly needed
  - Reduces transportation costs by 65% or more
    - Fit over 3 miles of glare screen on one semi truck, compared to 1 mile of competitor's product
  - Reduces storage space needed by 80% or more
    - quick to disassemble and store
    - compact stacking of rails and blades
  - Blades are repositionable on-site for barrier wall relocation
    - only two blades need to be removed for relocation
    - base rail remains in place
  - Standard product is for use on left side of traffic
    - can be provided for use on both left and right sides
  - Rail mounts flush on barrier wall eliminating rail fractures
  - All polymer plastic
    - no fiberglass splinters
    - no rust
    - durable and long lasting
  - 6"W blades
    - available in heights 18" to 24", other heights upon request
  - 6"W rails
    - available in various lengths up to 15'

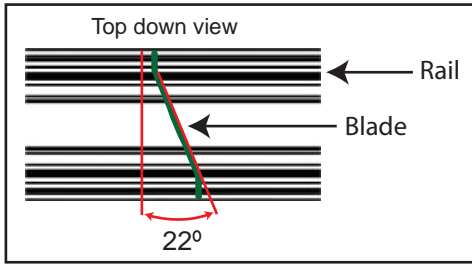


Blade easily snaps into Base Rail

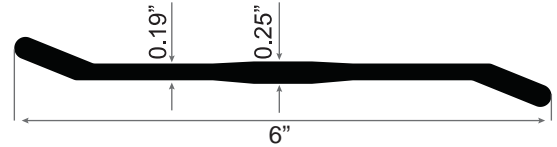
**PLASTICADE®**

# Plasticade®

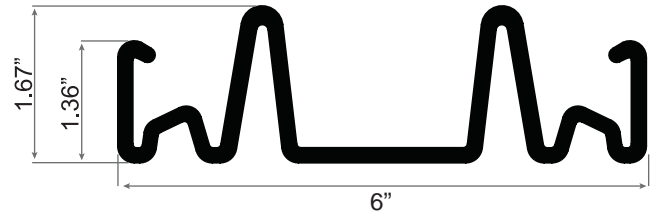
## Modular Glare Screen



Blade Dimensions



Rail Dimensions



Save Money  
on Transportation!



Fit 1 mile of glare screen on 5 pallets

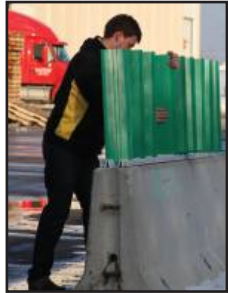
VS.



Takes a semi truck to hold only  
1 mile of the competitor's product

Save Money  
on Labor!

12' Barrier Wall



Assemble at job site in 37 seconds  
Only 11 pieces to assemble!

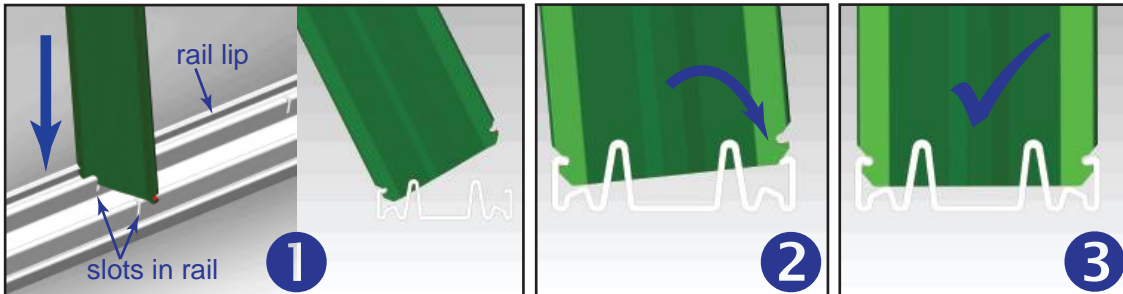
VS.



Competitor's must be preassembled in a warehouse  
12' barrier has 121 pieces to assemble

Blades snap into rail.

Place notch in blade under lip in rail. Push down into slots. Push second notch under second rail lip.



Place removal tool near a blade. Pull back on tool and rail to release blade from rail lip.



Removal Tool



**PLASTICADE®**

100 Howard Ave.  
Des Plaines, IL 60018  
phone (800) 772-0355  
info@plasticade.com  
[Plasticade.com](http://Plasticade.com)

US Patent 9,528,230  
CA Patent 2901010  
CN Patent ZL20148008896.6

**MADE IN THE USA**