

**PLASTICADE®**

Increase your visibility.



# AIRPORT SAFETY PRODUCTS



**RUNWAYS • AIRCRAFT • CONSTRUCTION ZONES • PARKING LOTS**

# LO-PRO™ AIRPORT BARRICADE

Low-profile interlocking barricade system used to close taxiways, runways, and delineate construction areas

8 ft. long and 10 in. high barricade, units interlock

Durable construction, 25 lbs.  
 - enhanced wall thickness on barricade bottom  
 - molded reinforcing ribs add stiffness and strength

Connectors are molded into the barricade, no pins to lose  
 - allows interconnected units to pivot in multiple orientations between 90° and 180°

7° angled sidewall  
 - facilitates visibility  
 - accepts 70"L x 6"H continuous retroreflective sheeting

Fill with up to 220 lbs. (26 gallons) of water  
 - two fill holes and one drain hole

Accepts two styles of lights  
 - 360° round, screw on airport lights  
 - standard barricade, bolt on lights

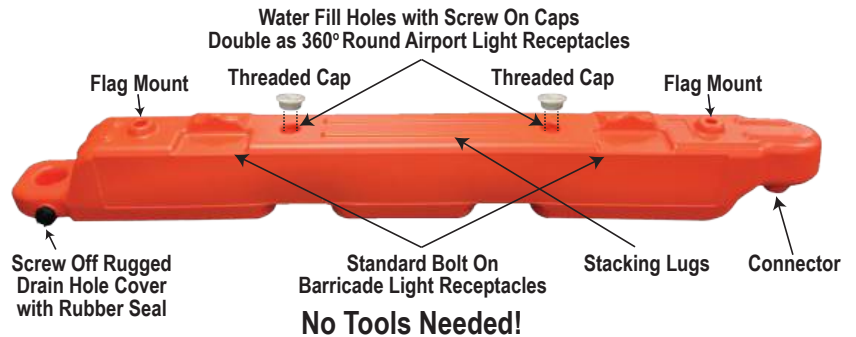
Two flag mounts

FOD (foreign object debris) Free

Forklift access, recessed areas at bottom of barricade

Stackable for transportation and storage  
 - multiple stacking lugs keep units in place while stacked

Made in the U.S.A.



Meets FAA Advisory Circular No. FAA AC150/5370-2G

## FLAG



20" x 20" vinyl flag  
 Stiffener keeps flag open  
 36"L wood dowel

## 360° RED SOLAR LED LIGHT



Ambient light sensing,  
 - turns on automatically in low light  
 - photocell sensitivity - 100-250 lux  
 4 LED bulbs  
 - brightness - 4.5 Candelas  
 Flashes 50 to 55 times per minute  
 Standard 2" straight pipe thread  
 for easy installation  
 Ni-Mh battery included  
 Sub C battery with flat top 1.2V 3400mAh high capacity

**WARNING**  
 This product can expose you to nickel, which is a known to the State of California to cause cancer and birth defects or other reproductive harm. For more information go to [www.P65Warnings.ca.gov](http://www.P65Warnings.ca.gov)

## AIRCRAFT BALLAST

Attain desired center of gravity balance the clean, easy way

Available in two weights, 25 and 50 lbs.

Made of 100% post-consumer recycled rubber

Easier to use and cleaner than sandbags, lead, or steel pellets

Molded-in handle for ease of handling

Low profile, leaves extra room in cargo space

Stackable

Customizable with your name or logo

Made in the U.S.A.

Dimensions: 30"L x 14"W (25 lb. - 1.8"H, 50 lb. - 3.5" H)



Compact Stacking

# WATER FILLED BARRICADE SYSTEM

## HYDROCADE™

72"L x 32"H longitudinal channelizing device

Unique stacking design allow for up to 50% more units per truckload  
- 200 units per truck, 8 units per pallet

Durable construction, impact resistant

Flat obstruction free side, position to eliminate pedestrian trip hazard

Conforms to any roadway design  
- turns 90° and adjusts to curbs up to a 6° incline

Connector pins snap onto barricade center for storage and transport  
- sturdy and tough pins, built with strength-enhancing channels

Fill with 81 gallons of water for LCD deployable weight of 745 lbs.  
- every unit is leak tested

Two forklift access areas - Stacking lugs keep stacked units from sliding

Light shelf for standard barricade light

Accepts optional fence panels in place of connector pins

Areas for retroreflective striped sheeting, 44" x 8" on both sides

Dimensions: 79" L x 17.5" W x 32" H  
Connected length: 72"  
Weight: Empty - 67 lbs., Water filled - 745 lbs.

Crash tested for TL-3 MASH Acceptance  
- submitted to FHWA\*

Meets MUTCD Standards

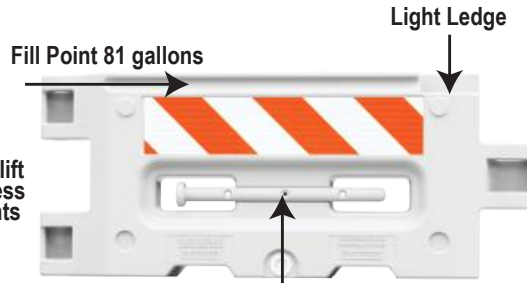
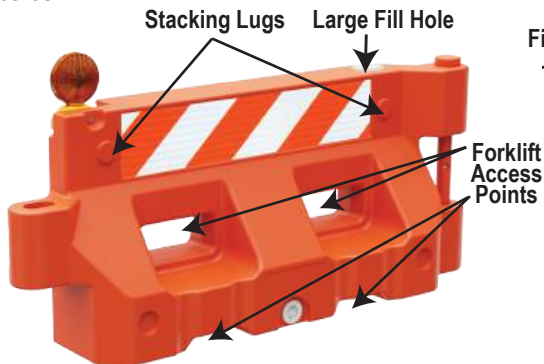
Made in the U.S.A.



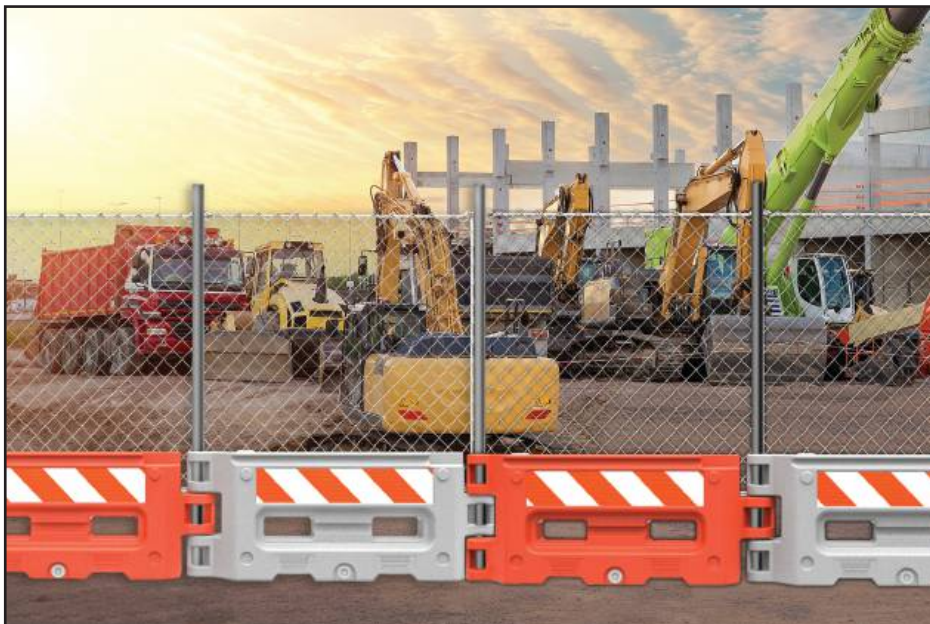
TL-3 LONGITUDINAL CHANNELIZING DEVICE\*

**UP TO  
50% MORE  
PER TRUCK**

**Unique Stacking  
Design!  
8 Units/Pallet  
200 Units/Truck**



**No More Missing Connector Pins!  
Simplifies Setup - Fast and Effortless  
Pins Securely Snap In Place For Storage**



# PVC CONES



High visibility PVC injection molded cones, durable and reboundable  
 - 36" in 10 lbs. and 12 lbs. fluorescent orange  
 - 28" in 7 lbs. and 10 lbs. fluorescent orange and 7 lbs. lime green  
 - 18" in 3 lbs. fluorescent orange and lime green  
 - Slimline cones in 28" and 36"

Fluorescent orange or lime green color is molded throughout  
 - resists fading  
 - provides high visibility protection

One piece design - cone is permanently molded to black base  
 - won't separate when hit by a vehicle  
 - rubber base designed to grip the road

Hand-grip at top

Stable on the road, won't be blown over

Stackable for storage, no sticking when removed

Recessed areas accept high intensity white collars  
 - 3M™ collars have excellent wide angle retroreflectivity

MASH Accepted, Meets MUTCD Standards



**Cone Weight Available**  
7 lbs.

## Stenciling



## NAVICADE™



42" channelizer (50" with handle)

Slim design  
 - perfect for narrow roadways where space is an issue

Very durable, designed to rebound after impact

Oversized handle, easy to grab with gloved hand or light attached

Stackable with or without base  
 42" available with 4 bands of sheeting  
 - choose 6" and/or 4" bands

Solid recycled rubber bases  
 - 10, 16, and 30 lbs.

Customize with molded in name or logo  
 - stenciling available

Dimensions: 50.4"H x 7.6"W, 3 lbs.

MASH Accepted WZ-301, Meets MUTCD Standards

Made in the U.S.A.



Unique angled handle allows workers wearing gloves to easily set up the Navicade, even with light attached.

# DELINEATORS

## GRIP TOP™



- 42" H (47.25" with handle)
- Large, strong handle is easy to grip  
- quick placement and pick-up
- Post diameter - 4"
- Orange polyethylene
- Cone bar slips over top
- Recessed areas accept two bands of sheeting  
- protects retroreflective sheeting from rips and scratches
- Bright orange for visibility
- Flange on bottom grabs base for tight fit
- Recycled rubber bases, 8, 10, 12, and 18 lbs.
- Weight: 1.6 lbs.
- MASH Accepted, Meets MUTCD Standards



## WATCHTOWER™



- Two sizes  
- 42" (47"H with handle)  
- 28" (33.6"H with handle)
- Comfort grip  
- dome cap provides strength and durability  
- easy placement and pick-up
- Post diameter - 4"
- Recessed areas accept two bands of sheeting  
- protects retroreflective sheeting from rips and scratches
- Flange on bottom grabs base for tight fit
- Durable polyethylene  
- bright orange for visibility
- Recycled rubber bases, 8, 10, 12, and 18 lbs.
- Weight: 42"H - 1.7 lbs., 28"H - 1.25 lbs.
- MASH Accepted, Meets MUTCD Standards



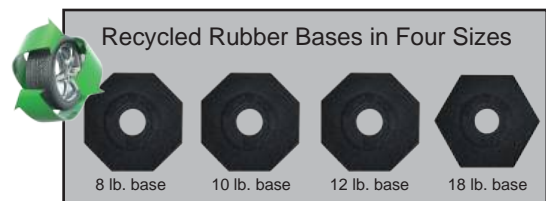
Easy Grip Handle

## OPEN TOP



- Two sizes  
- 42"  
- 28"
- Post diameter - 4"
- Flange on bottom grabs base for tight fit  
- 5.375" dia.
- Quick to set up
- Reflective bands, 3" or 4" wide
- Durable polyethylene
- Recycled rubber bases, 8, 10, 12, and 18 lbs.
- Weight: 42"H - 1.7 lbs., 28"H - 1.1 lbs.
- MASH Accepted, Meets MUTCD Standards

### All 3 Delineators Use The Same Bases



# AIRCRAFT CHOCKS



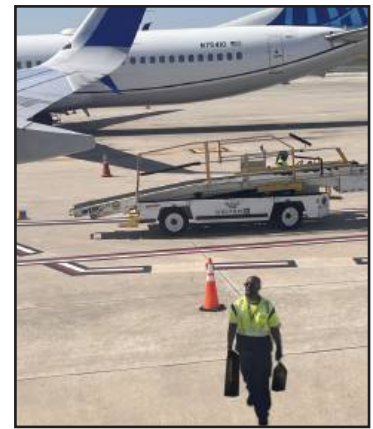
Yellow Rope Connect




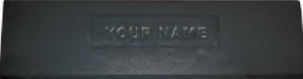




Yellow Rope Handles



Vinyl Tubing Over Yellow Rope Handles

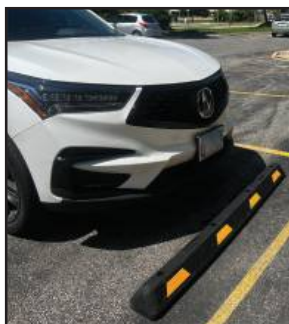


<b>Visibility Options</b>		
		
Cat Eye Reflectors Reflective glass beads help with nighttime visibility. Deep set in recessed area. 4 on each side standard.	On both sides of each chock Painted Recess	Painted Chock Standard Colors: Orange, Red, Blue, Yellow, White, & Green
<b>Custom Embossing</b>		
Add your logo, name, website, and/or phone number to both sides of each chock Standard nameplate size for embossing is 14"W x 3"H		
		
Name Embossed in Rubber	Name Embossed with Painted Recess	Name Embossed on Painted Chock

24"W x 7"D x 6"H  
24 lbs. ea. - 48 lbs./pair  
Sold in pairs only  
For Wide Body Aircraft

Minimum order quantity of 200 required for options

# PARKING STOPS



Resistant to weather, oil, salt, moisture, UV light, and temperature

Will not warp, chip, or crack

Available in 6 foot or 4 foot lengths

Flexible, conforms to surface contours

Maintenance Free

High visibility at night  
- reflective stripes in yellow or white

Made in the USA using recycled rubber



Dimensions (nominal)  
72"L x 6"W x 4.5"H, 35.5 lbs.  
48"L x 6"W x 4.5"H, 30 lbs.

# SPEED BUMPS



End Caps are optional



2.5" High, 6' or 4' sections, made from recycled rubber

Reflective yellow tape is embedded in the rubber, increases visibility

Resistant to weather, oil, salt, moisture, UV light, and temperature

Will not warp, chip, or crack

Good for parking lots & slow roadways  
- reduces speeds 2-5 mph

Cut with a utility knife if necessary

Optional cat eye reflectors

Dual bottom channels for drainage, protects wire, hose, or pipe

End caps and hardware sold separately

Made in the USA

Dimensions 6': 72"L x 12"W x 2.5"H, 52 lbs. - 4': 35 lbs.  
End Cap: 7"L x 12"W, 3.5 lbs.



# CROSSCADE™ PEDESTRIAN CROSSING SIGNS

Impact resistant plastic panel and recycled rubber base

Press fit base, push panel down into base, using foot ledge for a tight fit

White 12"W vertical panel comes in two heights, 24" H or 36"H

28 lb. and 43 lb. recycled rubber bases

Hole for attaching a barricade light (D Cell & 6 Volt)  
- ledge holds light upright

Molded in handles, both panel and base  
- ergonomic, easy to use with gloves on

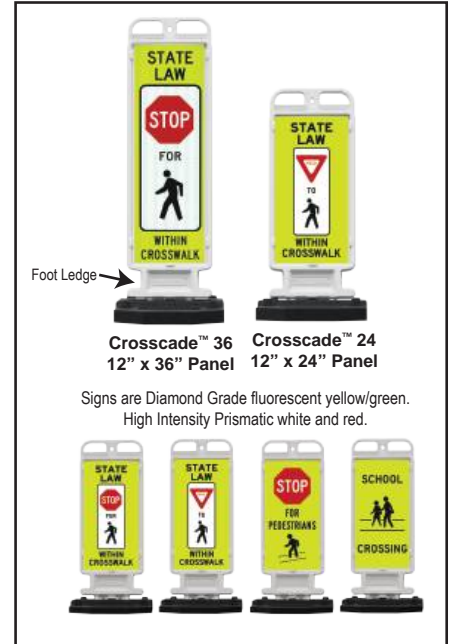
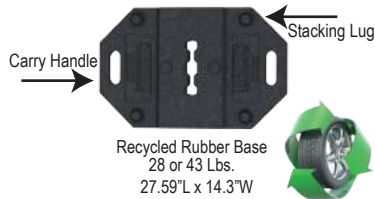
Stacking lugs on panels  
- keeps stacked panels from sliding

Signs are applied directly to panel face  
- no bolts needed

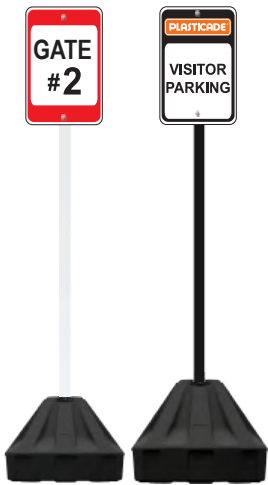
Meets MUTCD Standards for pedestrian barricades

Crosscade 24: 38.42"H x 14.3"W x 2"D, 5.5 lbs.  
Crosscade 36: 50.42"H x 14.3"W x 2"D, 8 lbs.

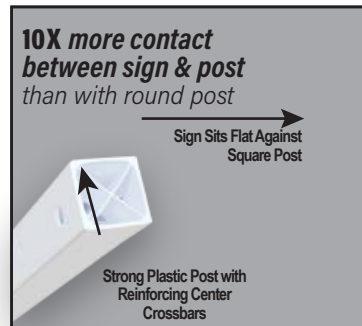
Made in the U.S.A.



## ROLL-A-POST™



Roll-A-Post™ 18 Roll-A-Post™ 24



Durable, thick walled plastic bases in two sizes  
- no rust, dents, or cracking

Wheels for easy relocation  
- sturdy plastic wheels come pre-installed

Square plastic post eliminates sign twisting  
- available in white and black  
- no special bracket needed  
- cap for top of post included

Withstands strong winds without tipping over when filled with sand

Large fill holes, fill with water, sand, or base gel

Post cap and hardware for attaching a sign included

Made in the U.S.A.



## RUBBER BASE SIGN STAND



Durable recycled rubber bases  
- three sizes: 30 lbs., 60 lbs., Stack for 90 lb. base  
- resistant to weather, oil, salt, moisture, & UV light  
- will not warp, chip, or crack

Withstands strong winds without tipping over

Molded-in Hand-grips make bases easy to pick up

Post cap and hardware for attaching a sign included

Optional wheels makes moving signs even easier  
- heavy duty, non-scratch plastic wheels

Made in the U.S.A.

**OPTIONAL WHEELS**  
comes with two double wheel assemblies installed



# Market Leading Design!

## SIGNICADE®



24" x 36"  
Signs

- Holds two signs 24"W x 36"H
- Use vinyl sheeting, corrugated plastic, metal, or acrylic signs
  - corrugated plastic signs can be attached with hook & loop fasteners, screws, or well nuts with screws
- Recessed sign area helps to protect signs
- No maintenance, all plastic, use indoors and out
- Molded-in handle for easy portability
- Hinges lock in open position
- Stacking lugs keep stacked units from sliding
- Can internally weight with dry sand, 10 lbs.(4.54 kg) total
- Available in white, black, yellow, orange, red, green, and blue
  - custom colors available with minimum order quantity
- Made in the USA

## SIGNICADE® DELUXE



- Holds two signs 24"W x 36"H
- Change signs in seconds
  - Quick-Change™ feature, signs slide in and out
  - no tape, hook and loop fastener, or screws needed
  - use rigid sign material 3/16" (4 mm) thick or less
- No maintenance, all plastic, use indoors and out
- Hinges lock in open position
- Stay Tabs™ ensure signs stay securely in place
- Stacking lugs keep stacked units from sliding
- Can internally weight with sand, add sand to each leg
- Available in white and black
  - custom colors available with min. order qty.
- Made in the USA

Choose A Genuine Signicade® or Signicade®Deluxe  
For Lasting Quality & Top Performance



Quick-Change™

Change your signs often...  
you can do it in seconds.



**PLASTICADE®**

Plasticade.com  
100 Howard Avenue  
Des Plaines, IL 60018  
(800)772-0355

Distributed By: