

ROCK-IT™

SIGN STAND

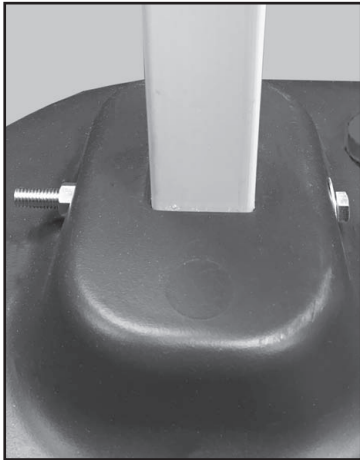
Rock It Back & Roll

Hardware Provided:

- 1 ea. Hex Bolt Zinc 3/8 x 5-1/2
- 2 ea. Hex Bolt Zinc 3/8 x 2-1/2
- 5 ea. Washer 3/8
- 3 ea. Locknut 3/8-16

INSTRUCTIONS

1. Use one 3/8 x 5-1/2 hex bolt, one washer, and one locknut to secure plastic post to Rock-It base (see photo).
2. Use two 3/8 x 2-1/2 hex bolts, two washers, and two locknuts to attach sign



Fill Base With Silica Sand:

Rock-It 18: fill base with 125 -150 lbs. of silica sand

Rock-It 24: fill base with 150 -250 lbs. of silica sand

Filling base with water is not recommended

PLASTICADE®

Plasticade.com

Part #8279 Rev. 1